



EDLIN & JARVIS
ESTATE AGENTS



60 Milton Street, Newark, NG24 3AW

£1,000 Per Month





£1,000 Per Month

60 Milton Street

Newark, NG24 3AW

- SOUGHT AFTER LOCATION
- COZY LOUNGE
- ENCLOSED REAR GARDEN
- THREE BEDROOMS
- MODERN SHOWER ROOM
- CALL NOW TO VIEW!!

From the moment you step inside, this delightful Milton Street home welcomes you with a bright and comfortable reception room—the perfect backdrop for relaxing after a long day or hosting friends.

The heart of the home features three spacious bedrooms, offering the flexibility that modern life demands, whether that's room for a growing family or a quiet, sunlit workspace. A well-positioned family bathroom serves the household with ease.

Located in one of Newark's most welcoming neighbourhoods, you'll enjoy a fantastic community feel with top-tier local schools, parks, and daily amenities just a short stroll away.

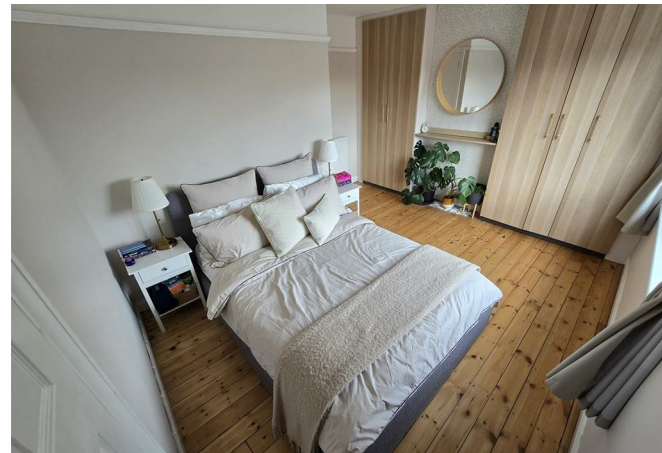
Blending classic charm with effortless practical living, this property is a wonderful opportunity for tenants to make a home.

Holding Deposit - £230

Deposit - £1153.84

EPC - C

Council Tax - B





Directions

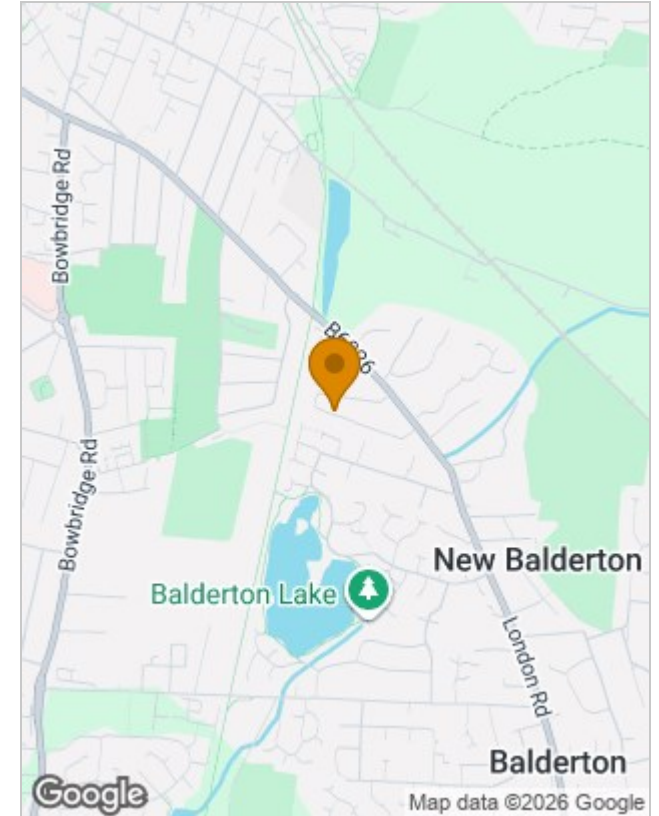




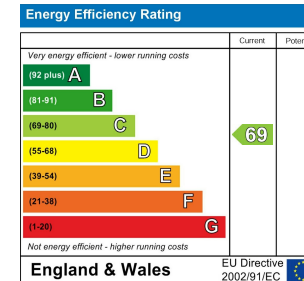
Floor Plans



Location Map



Energy Performance Graph



Viewing

Please contact our Lettings Office on 01636 555043 if you wish to arrange a viewing appointment for this property or require further information.

The particulars are set out as a general outline only for the guidance of intended purchasers or lessees, and do not constitute, any part of a contract. Nothing in these particulars shall be deemed to be a statement that the property is in good structural condition or otherwise nor that any of the services, appliances, equipment or facilities are in good working order. Purchasers should satisfy themselves of this prior to purchasing.

36 Middle Gate, Newark, NG24 1AL

Tel: 01636 555043 Email: enquiries@edlinandjarvis.co.uk <https://www.edlinandjarvis.co.uk>